

A Cold, Wet and Windy start to the week

An intense cold front, currently positioned to the south-west of South Africa is expected to make landfall overnight tonight (Monday 22 July 2019) with a second front following closely tomorrow (Tuesday 23 July 2019). These cold fronts are expected to result in a significant drop in temperatures, windy and wet conditions as well as snow in the western and southern parts of the country.

The cold, wet and windy conditions will first be felt in the Western and Northern Cape tomorrow and will spread to the central parts of the country by Wednesday with temperatures expected to decrease significantly (Fig. 1) on Wednesday.

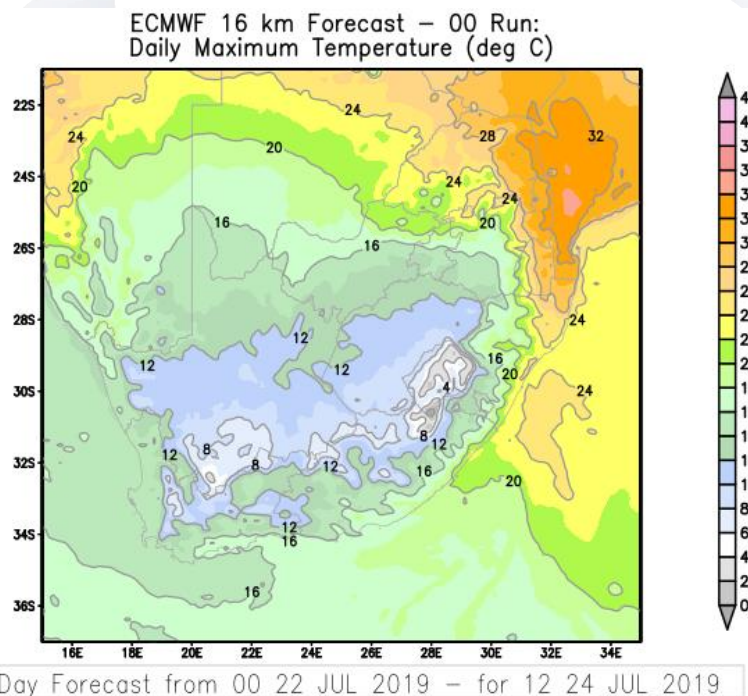


Figure 1: Predicted maximum temperatures for Wednesday 24 July 2019 as generated by the 16km ECMWF Model (© ECMWF) (© SAWS).

**Certified for
Excellence**

Board Members: Ms Nana Magomola (Chairperson), Adv Derick Block, Dr Phillip Dexter (Deputy Chairperson), Mr David Lefutso, Mr Jerry Lengoasa (CEO), Dr Mphekgo Maila, Ms Kelebogile Moroka-Mosia, Ms Sally Mudly-Padayachie, Dr Tsakani Ngomane (DEA Rep), Mr Itani Phaduli, Ms Feziwe Renqe.
Company Secretary: Ms Thandi Zide

Strong winds will accompany these cold fronts from Monday (22 July) to Wednesday (24 July) over the Western Cape and the central and western parts of the Northern and Eastern Cape Provinces. These strong winds, reaching 65-75 km/h, could lead to the damage of settlements (both formal and informal), possible structural damage, especially temporary structures, interruptions to power utilities as well as an increase in travel times due to falling trees and reduced visibility due to dust storms. Susceptible roads could also be closed during this time.

This past weekend saw some snow reaching the ground in various highlying areas in the Western Cape. Further snow is expected once again in a similar area starting on Tuesday evening and possibly reaching more than 10 cm in places (Karoo Hoogland, Cederberg and Langeberg). This could lead to icy roads and possible loss of vulnerable livestock as well as non-major passes being closed for a short period of time. The snow is expected to spread eastwards into the Eastern Cape by Tuesday evening reaching the Sneeuberg and southern Drakensberg.

The rainfall will mainly be confined to the western and southern parts of the country (Western, Northern and Eastern Cape) (Fig. 2) and will clear by Thursday (25 July 2019). The bulk of the rainfall will occur in the western parts of the Western Cape on Tuesday (23 July 2019) (Fig. 2) which could be heavy at times and lead to flooding of roads and informal settlements as well as cause major traffic disruptions. There is also a possibility of rockfalls and mudslides in places.

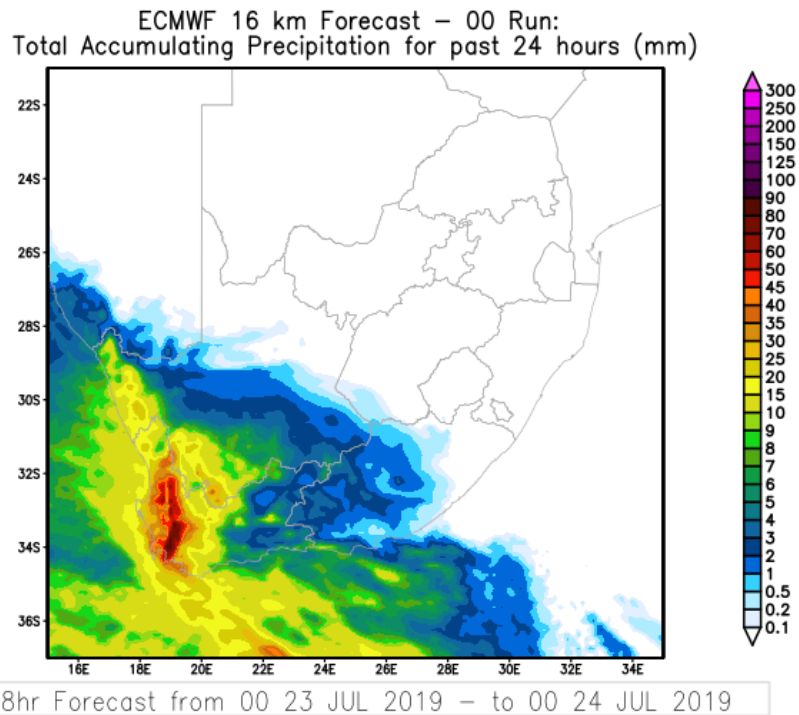


Figure 2: 24 hour rainfall as suggested by the ECMWF NWP model for Tuesday 23 July 2019 (© ECMWF) (© SAWS).

The South African Weather Service will continue to monitor any further developments relating to this weather system and will issue subsequent updates as required. Furthermore, the public are urged and encouraged to regularly follow weather forecasts on television and radio.

Updated information in this regard will regularly be available at www.weathersa.co.za as well as via the SA Weather Service Twitter account @SAWeatherServic

Compiled by: Elizabeth Webster.

Edited by: Thapi Makgabutlane and Deon van der Mescht.

For technical and weather enquiries:

National Forecasting Centre; Tel: 012 367 6041

Media enquiries: Ms. Hannelee Doubell: Manager, External Communications; Tel: (012) 367 6104; Cell: 072 222 6305; E-mail: hannelee.doubell@weathersa.co.za

Website: www.weathersa.co.za; Twitter: @SAWeatherServic; Facebook: South African Weather Service/ @WeatherServic

USSD: Dial *120*7297#; Weather-ready, Climate-smart

Download our WEATHERSMART APP for smartphones for free from the APP store